

A woman with long blonde hair, wearing a vibrant red, strapless, sequined dress with a full, ruffled skirt, is leaning against a metal railing on a staircase. She is smiling and looking towards the camera. The background is a dark, industrial-looking structure with metal beams and stairs. The lighting is dramatic, with strong highlights on the woman's dress and face, and deep shadows in the background.

2017

TOM PARIS

THEATRE DESIGNER

PORTFOLIO



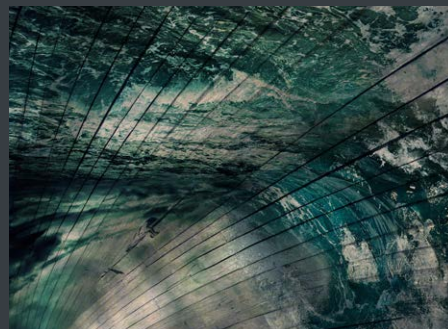
AS ASSOCIATE DESIGNER



Pelléas et Mélisande
Associate Designer to Rae Smith
Scottish Opera



Wonder.Land
Associate Set Designer to Rae Smith
National Theatre



The Tempest
Associate Designer to Rae Smith
Birmingham Royal Ballet



Cavalleria Rusticana & Pagliacci
Associate Set Designer to Rae Smith
The Metropolitan Opera

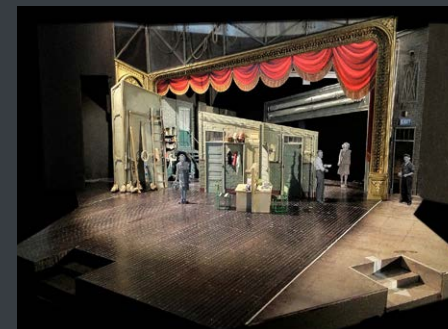
AS ASSISTANT DESIGNER



Harry Potter & The Cursed Child
Assistant Costume designer to Katrina Lindsay
West End



Matilda
Assistant Designer to Rob Howell
West End/Broadway



Kiss Me Kate
Assistant Designer to Robert Jones
Chichester Festival Theatre & Old Vic



American Psycho
Assistant Costume Designer to Katrina Lindsay
Broadway

CARMEN

.....

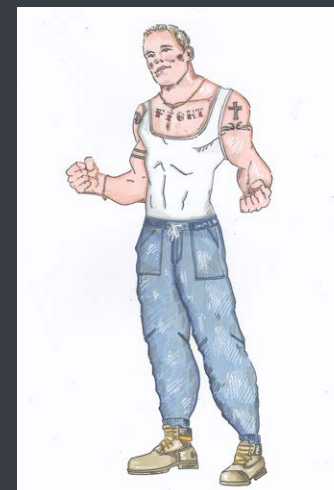
Carmen

Director: Ben Occhipinti
Lighting Designer: Charlie Morgan Jones
Winterbourne Opera
Salisbury Cattle Market



CARMEN

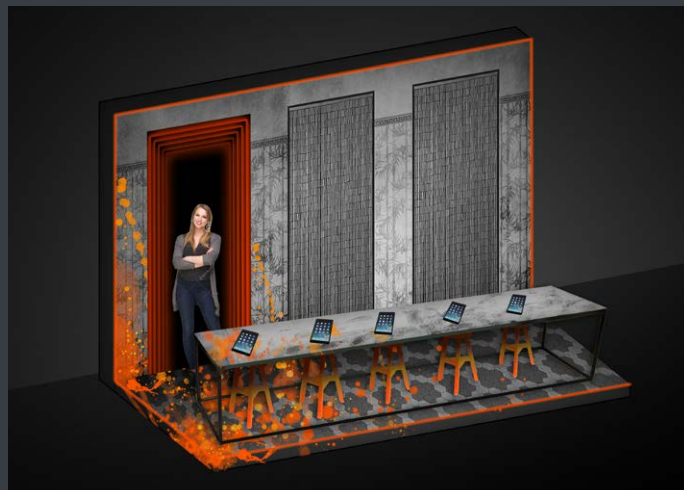
.....



Carmen

Director: Ben Occhipinti
Lighting Designer: Charlie Morgan Jones
Winterbourne Opera
Salisbury Cattle Market

ENTER WONDER.LAND



Enter Wonder.Land
Digital Applications: Play Nicely
National Theatre

ENTER WONDER.LAND

Enter Wonder.land
Digital Applications: Play Nicely
The National Theatre

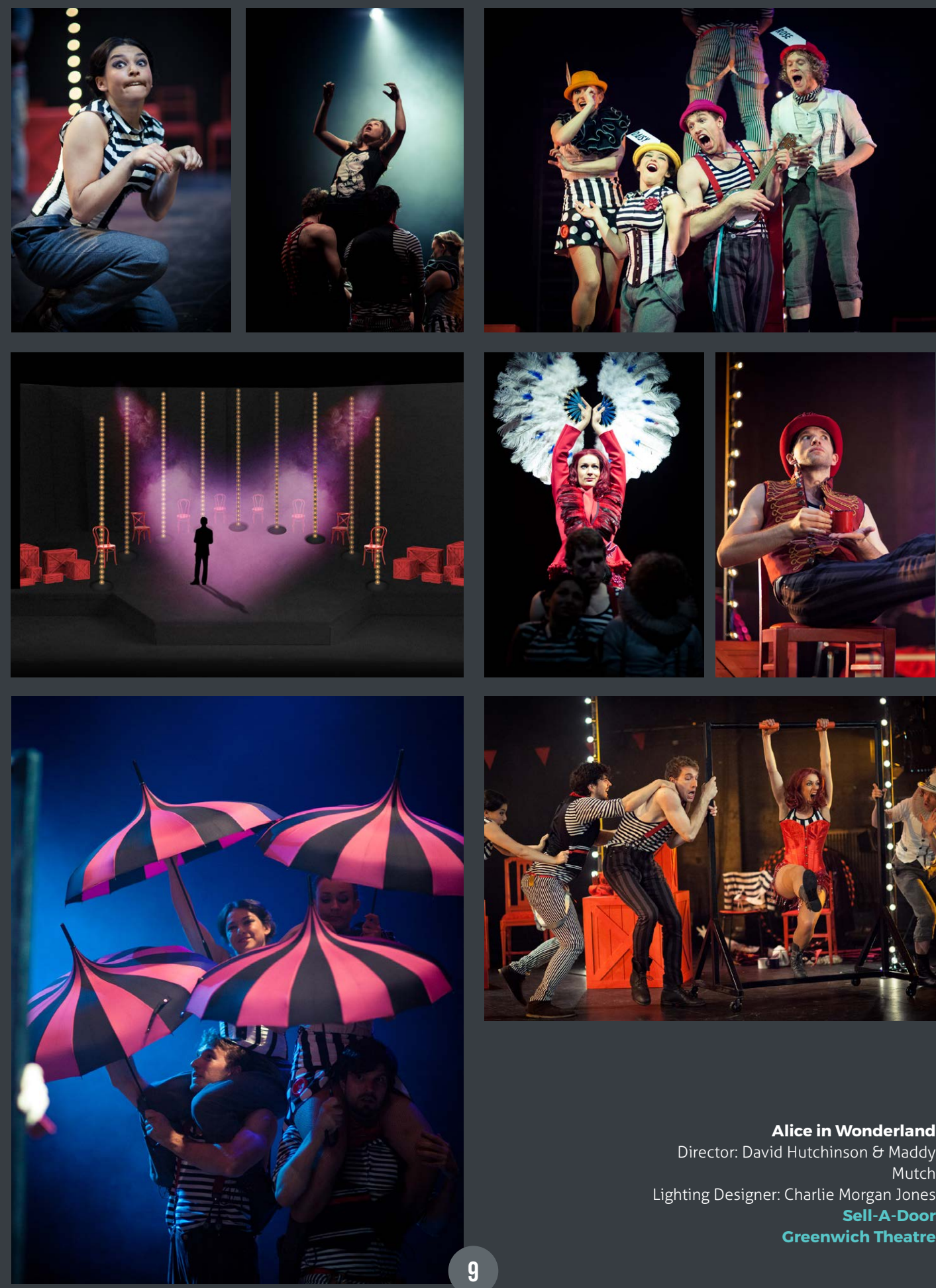


ALICE IN WONDERLAND

Alice in Wonderland
Director: David Hutchinson & Maddy Mutch
Lighting Designer: Charlie Morgan Jones
Sell-A-Door
Greenwich Theatre



ALICE IN WONDERLAND



Alice in Wonderland
Director: David Hutchinson & Maddy Mutch
Lighting Designer: Charlie Morgan Jones
Sell-A-Door
Greenwich Theatre

SAXON COURT

Saxon Court
 Director: Melanie Spencer
 Lighting Designer: Katherine Graham
Made By Brick - Southwark Playhouse



“Tom Paris’ set evokes the mundane greyness of office life, splitting the audience down two sides and turning the desks into an almost gladiatorial gauntlet for these warring colleagues. Katherine Graham and Tom Hackley’s lighting and sound is polished and this production looks classy”

The Stage

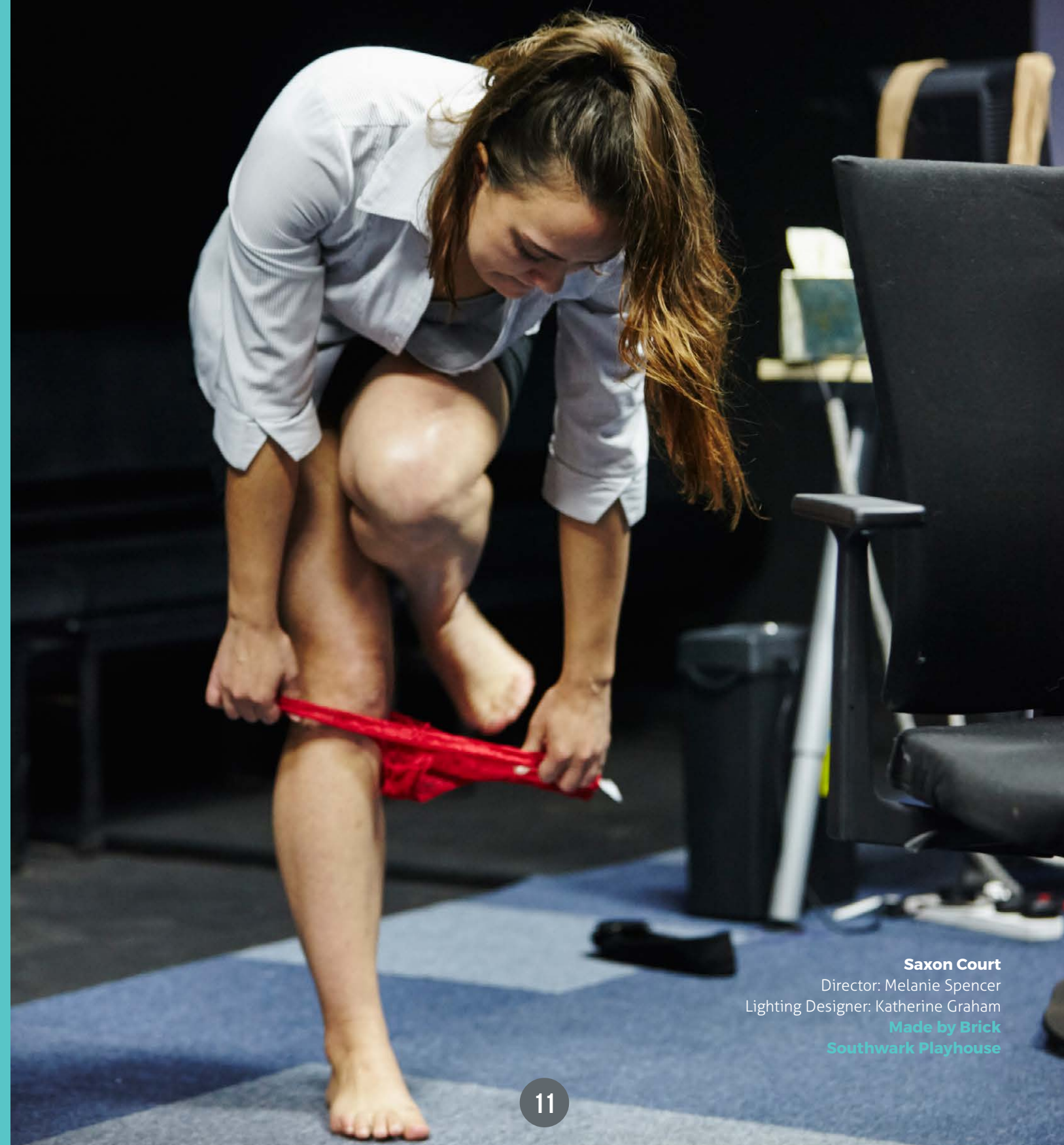
“Melanie Spencer’s production boasts some committed performances and a fine set, by Tom Paris, that seats us on both sides of a carpet-tiled office”

The Times

“The drama is placed within a corridor of office space that is framed by the voyeuristic eyes of the audience. Within this void designer Tom Paris has created a greyscale office that is as accurate in its corporate detailing as it is repulsive in its blandness”

A Younger Theatre

SAXON COURT



Saxon Court
 Director: Melanie Spencer
 Lighting Designer: Katherine Graham
Made by Brick
Southwark Playhouse

THE ELIXIR OF LOVE

The Elixir of Love

Director: Ben Occhipinti

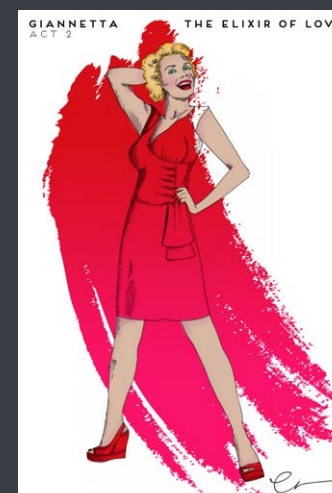
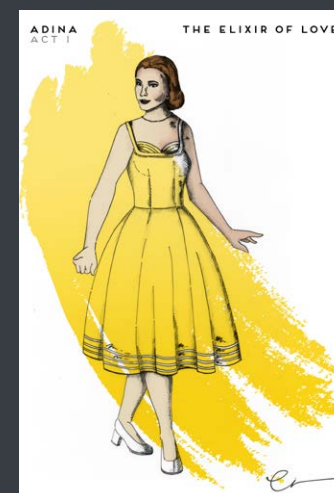
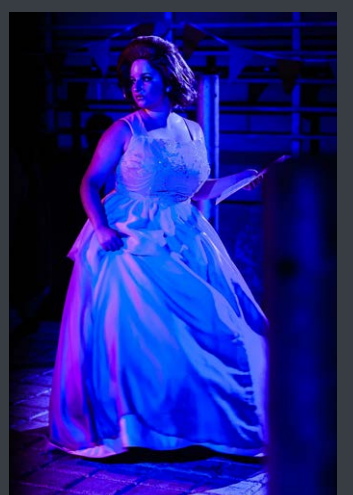
Lighting Designer: Charlie Morgan Jones

Winterbourne Opera

Salisbury Cattle Market



THE ELIXIR OF LOVE



The Elixir of Love

Director: Ben Occhipinti

Lighting Designer: Charlie Morgan Jones

Winterbourne Opera

Salisbury Cattle Market



FAUST



Faust
Director: Ben Occhipinti
Lighting Designer: Jon Roche
Winterbourne Opera
The Chapel Nightclub

FAUST

Faust
Director: Ben Occhipinti
Lighting Designer: Jon Roche
Winterbourne Opera
The Chapel Nightclub



NOYES FLUDDE

Noyes Fludde
 Director: Ben Occhipinti
 Iford Arts / Salisbury Playhouse
 The Tithe Barn - Bradford Upon Avon



NOYES FLUDDE



Animals - Costume Drawing

A simple concept for Hats to be customised and worn by the 500 young performers.



Production Photo

The model ark is puppeteered into the flood.



Production Photo

The Animals wear there customised hats, and coloured rain ponchos.



Noyes Ark - Prop Rendering

A lightweight miniature

Noyes Fludde
 Director: Ben Occhipinti
 Iford Arts / Salisbury Playhouse
 The Tithe Barn - Bradford Upon-Avon

EVITA

Evita
 Director: Benjamin Occhipinti
 Lighting Designer: Sarah Bath
Salisbury Playhouse

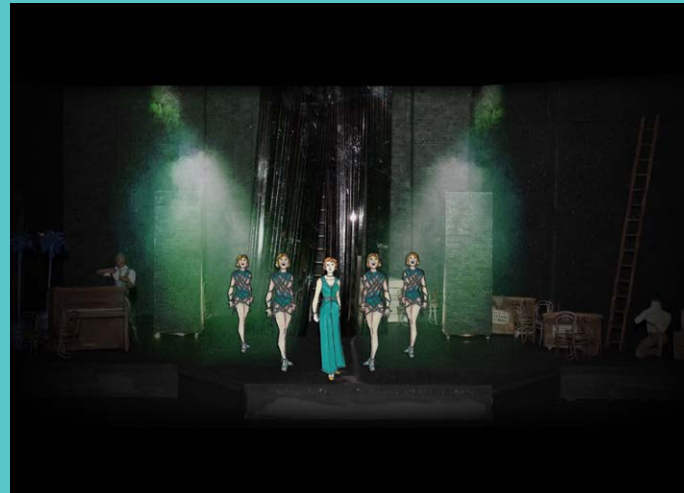


EVITA

Evita
 Director: Ben Occhipinti
 Lighting Designer: Sarah Bath
Salisbury Playhouse

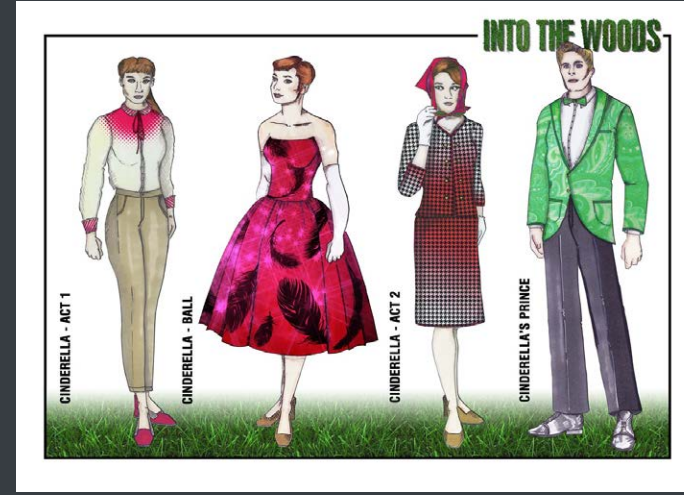


MACK & MABEL



Mack & Mabel
Director: Ben Occhipinti
The Greenwich Theatre

INTO THE WOODS



Into The Woods
Director: Ben Occhipinti
Lighting Designer: Charlie Morgan Jones
The Lowry

TOM PARIS
.....

CONTACT ME



tomwparis@hotmail.co.uk



www.tomparis.co.uk



07990 930328



Represented by Cole Kitchenn

adam@colekitchenn.com